



Bibby Stockholm Factsheet

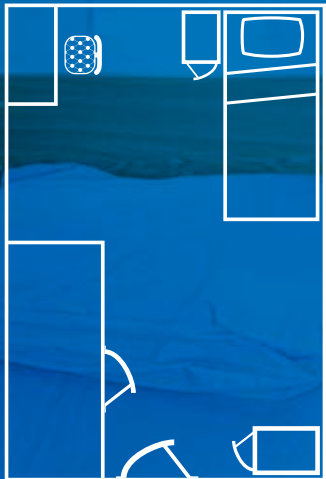
Visit www.bibbymaritime.tv/stockholm
to view a virtual tour of Bibby Stockholm



Bibby Stockholm has 222 cabins and can accommodate up to 506 guests, in high-quality en-suite bedrooms alongside a range of modern facilities over three decks.

Bibby Stockholm has supported projects of all shapes and sizes and has accommodated a variety of workers in her comfortable rooms. She always receives positive feedback from guests staying onboard.

A Typical Bedroom Layout



- Spacious furnished bedroom
- Private en suite shower room
- Flatscreen TV
- Wi-fi connection
- Wardrobe, desk and further storage
- Windows in all bedrooms

“The vessel arrived well in advance and was welcomed by those living onboard. The quality of the vessel was excellent, and the en suite bedrooms and public facilities were well received amongst our workers.”

Petrofac



Facilities onboard include:

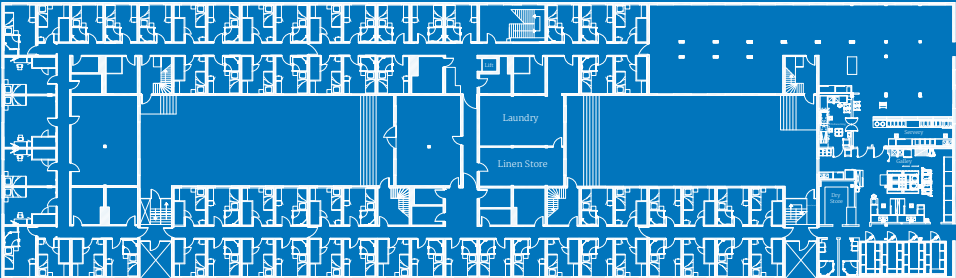
- 222 en-suite bedrooms
- Kitchen and restaurant
- Reception desk on entry
- TV and games rooms
- Gym and furnished bar
- Wi-fi throughout

“We have worked with customers around the world to create the best room layouts and furnishings to keep workforces happy and comfortable during their stay”

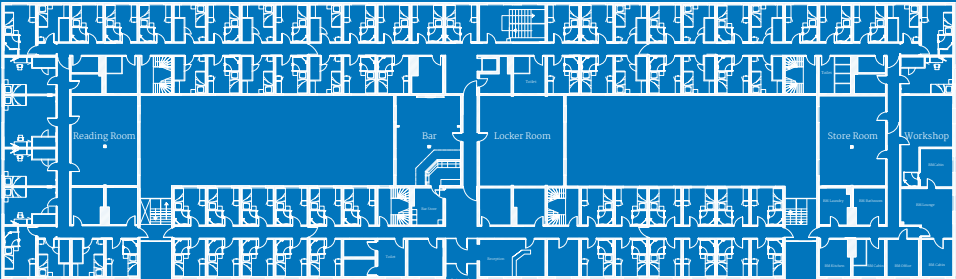
Jane Rogers, Accommodation Manager



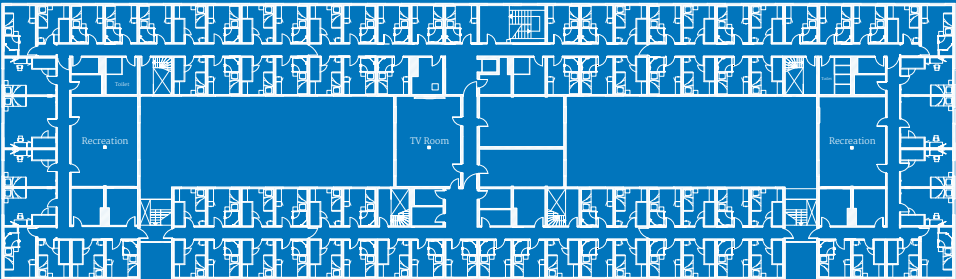
Ground Floor Layout



First Floor Layout



Second Floor Layout



Technical Details

Vital Statistics

Length Overall:	93.44m
Width:	27.43m
Depth:	6.1m
Bottom of keel to highest point:	17.1m
Working Draft:	2.2m
Gross Tonnage:	10659 tons
Net Tonnage:	3197 tons
IMO Number:	8869476

Classification, Rules and Regulations

The unit is classed by Lloyds Register:

AT moored Pontoon

Port of Registry: Bridgetown, Barbados

Building Code: Swedish Building Code

Fire Detection, Fire Protection and Alarm

All Accommodation spaces are covered with smoke and heat detectors. Manual fire alarm push buttons are located in the stairwells and adjacent to all external doors.

Power Supply

All shore service connections are at barge deck level. The unit can also provide emergency power through 3 Cummins diesel generators each developing 380V, 192kW, 50Hz. 3 phase and neutral transformed to 220V for domestic use.

Water and Sewage System

A Trustwater water treatment plant is installed. Hot water is provided throughout the barge by the onboard boilers.

The sewage system is equipped for discharge to shore directly from the sewage tank by two submersible pumps contained in the tank.