



General Information

Name:	Bibby Progress
Type:	Floating Accommodation Barge
Class:	Lloyds Register + 100 AN Pontoon, *IWS
Flag:	Barbados
Port of Registry:	Bridgetown, Barbados
IMO Number:	8639936

Main Dimensions

Barge Length	91.4m metres (incl accommodation)
Barge Width	27.4 metres
Barge Depth	6.1 Metres
Accommodation Height	12.30 Metres from Barge roof to deck level plus exhausts at 4.10 Metres
Moored Draught	2.2 metres (this can be adjusted to meet requirements)
Tow Draught	2.30m average / 2.70m max
Gross Tonnage	12611 tons
Net Tonnage	4030 tons

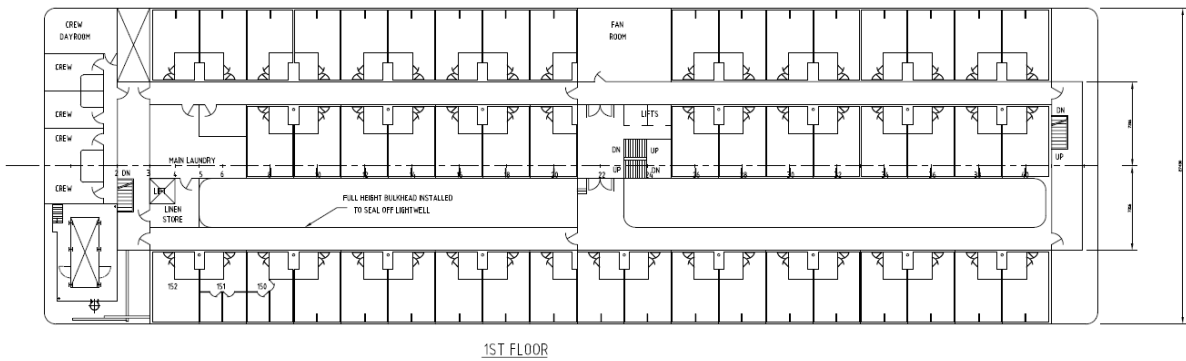
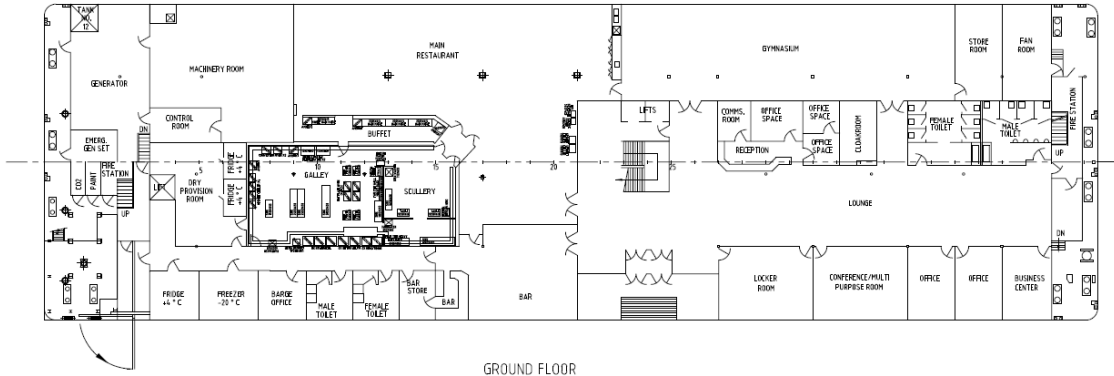
Amenities

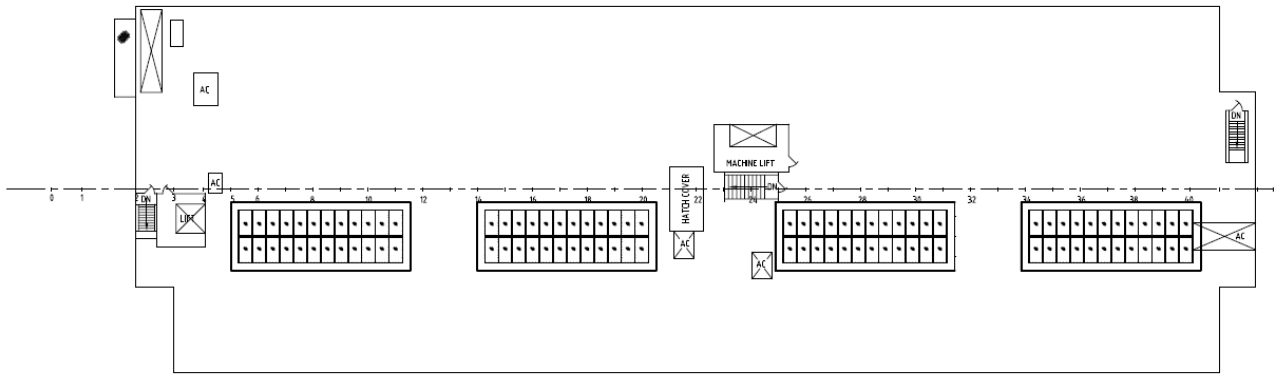
Water	Two FW Storage Tanks with 568m ³ Total Capacity
Fuel Oil	Low Sulphur Marine Gas Oil (MGO) – ISO 8217-2005 DMA
Fuel Tank	Capacity 550m ³ litre
Electrical	- 440V, 60Hz 3 phase and 220v / 60Hz for Domestic use - Two shore power breakers also available: 800A and 1600A

Accommodation

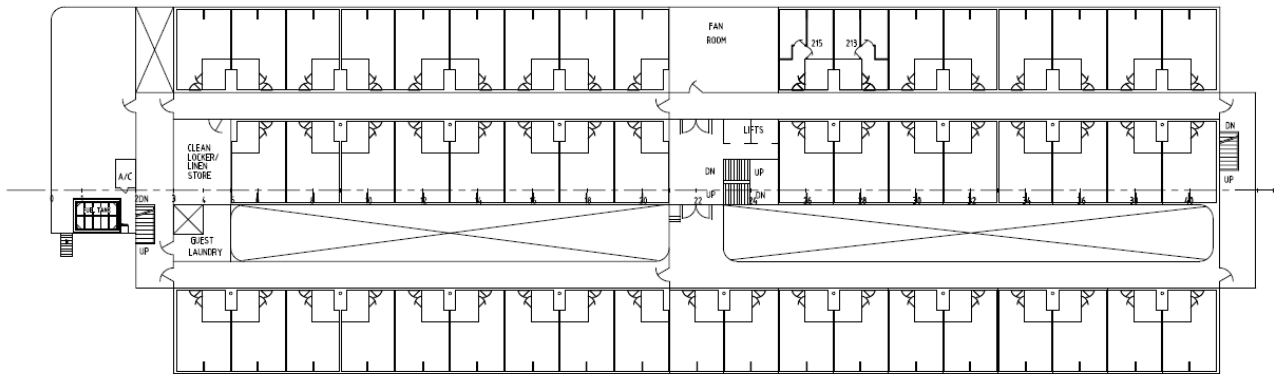
- Sleeping accommodation 151 en-suite rooms and 8 rooms with shared bathrooms
- Restaurant
- Commercial Kitchen / Galley
- Gym
- Bar & Lounge
- Locker / Changing Room
- Main Laundry and Linen Stores
- Two Guest Laundry rooms



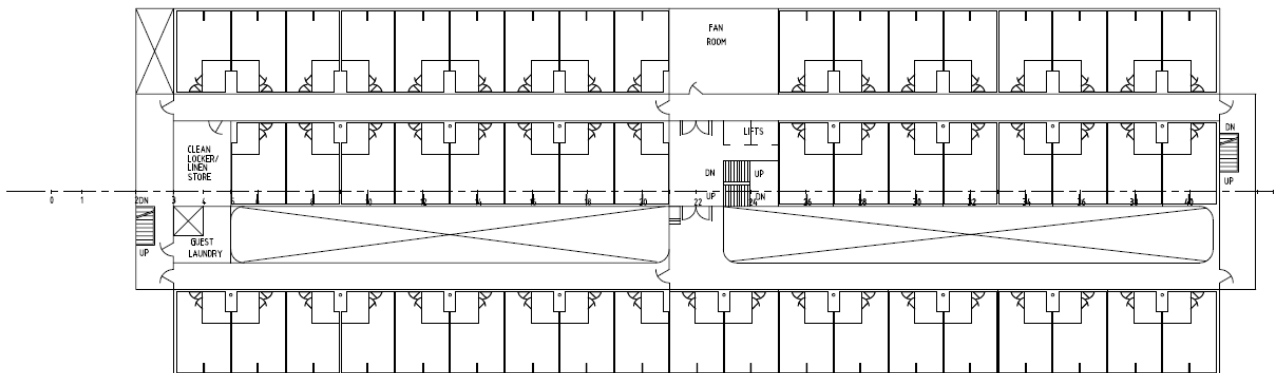




ROOF TOP



2ND FLOOR



3RD FLOOR

